

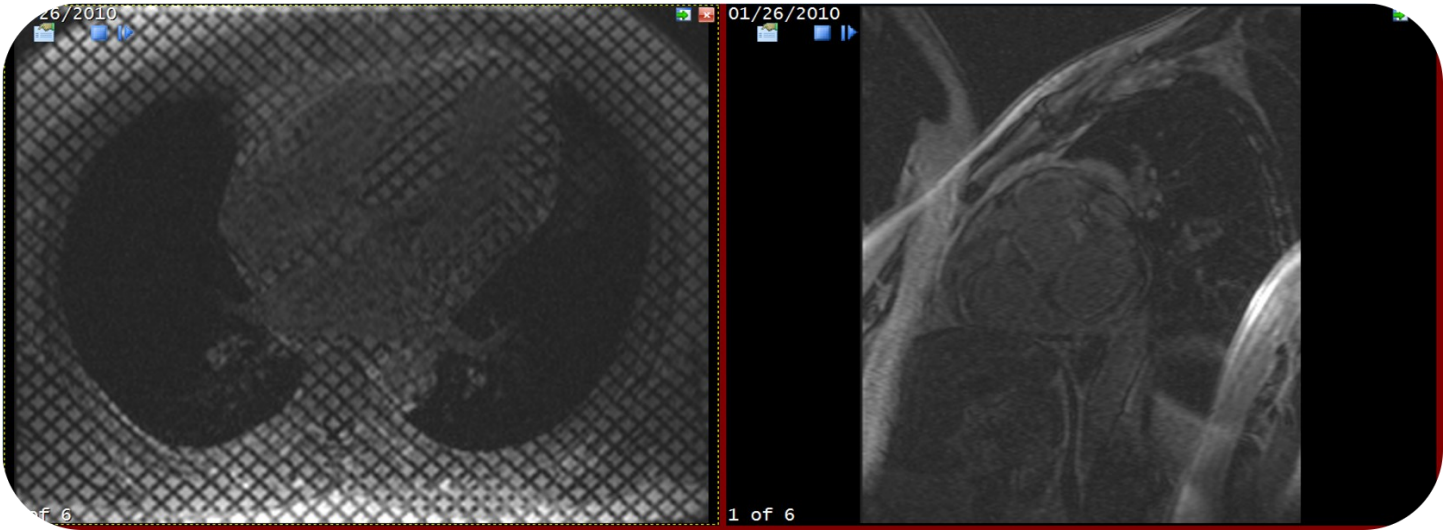
## Picture Archiving Communication System (PACS)

VersaSuite-PACS enables physicians to open many studies with one click, and write and share detailed reports easily.



- **Open Many Studies with One Click**
  - ⇒ Load hundreds of images from many dates and instruments in one click
- **Template Driven Reporting Integrated into the PACS**
  - ⇒ Structured data documentation —> powerful data analytics
  - ⇒ Consistent and concise reports generated for PCPs
  - ⇒ No transcription required —> faster documentation and money saved
- **Enterprise-Strength Solution**
  - ⇒ Supports all medical disciplines, including: cardiology, dentistry, dermatology, OBGYN, ophthalmology, orthopedics, radiology, and more
  - ⇒ Seamless multi-site support: images sync and download on demand
- **Device Integration and Interoperability**
  - ⇒ Works with any DICOM-compliant device
  - ⇒ DICOM, IHE, HL7 compliant, including CCD import/export
  - ⇒ DICOM-converter; works in real-time or batch/legacy workflows
- **Intuitive Image Navigation and Manipulation**
  - ⇒ Navigate through multiple studies simultaneously
  - ⇒ Scroll through multi-line scans, zoom, pan, and annotate studies
  - ⇒ Pause, play, slow down, and speed up videos
  - ⇒ Advanced window leveling tools
- **Build Incredible 3D Models from Multi-Line Scans**
  - ⇒ The first PACS to build 3D models of OPT ophthalmic images
- **HIPAA 5010 Compliant and ICD 10 Ready**



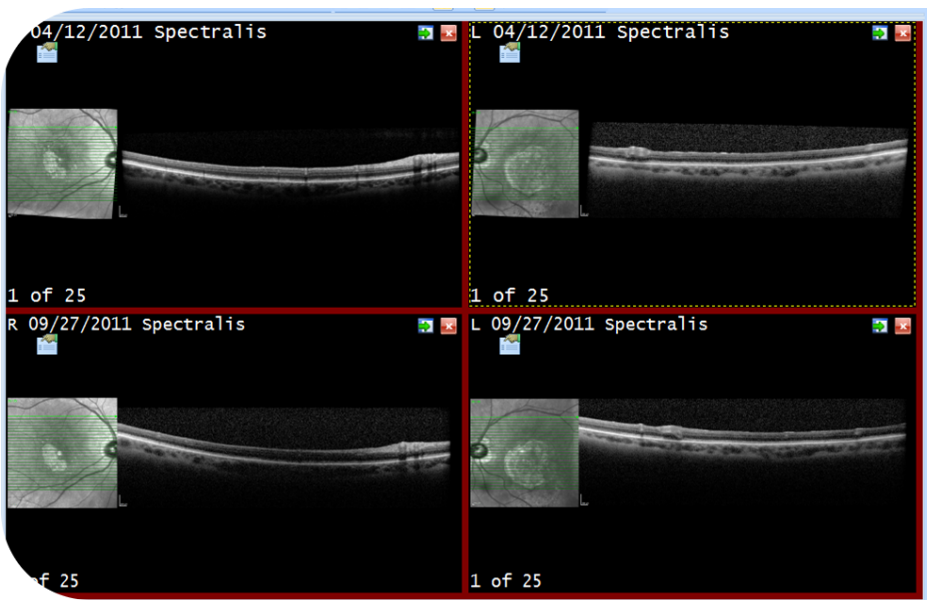


Sensation 16  
Study: 1  
CORONARY CTA  
test series  
Se# 3

W: 155 L: 296  
Unit: Centimeters

LEADTOOLS Test  
Wagner, John  
PID 945-45-4754  
DOB 07/12/1965

03/01/2003  
Se Tim 12:00:00.000000



### Ophthalmic Diagnostic Report

Patient: OCT Spec PACS      Date of Birth: 1929-12-09  
 Type of Study: Optical Coherence Tomography

Referral Diagnosis: \_\_\_\_\_  
 Date of Study: \_\_\_\_\_  
 Eye(s) Tested: \_\_\_\_\_  
 Tech ID: \_\_\_\_\_  
 Instruments: \_\_\_\_\_

MRN: \_\_\_\_\_  
 Attending Provider: Casey, Ben  
 Ordering Provider: Casey, Ben  
 Interpretation by: Admin, Admin

Test Subject: \_\_\_\_\_  
 Test Date: \_\_\_\_\_

Macular Edema	CSR	VR Interface	Optic Nerve
AMD	Retinal Vascular	Retinal Integrity	All

OD

+	Drusen	-	?
+	RPE Lesion	-	?
+	CNV	-	?
+	Fibrovascular Scar	-	?
+	CNV-associated Cavitations	-	?
+	CNV-associated Subretinal Fluid	-	?

OS

+	Drusen	-	?
+	RPE Lesion	-	?
+	CNV	-	?
+	Fibrovascular Scar	-	?
+	CNV-associated Cavitations	-	?
+	CNV-associated Subretinal Fluid	-	?